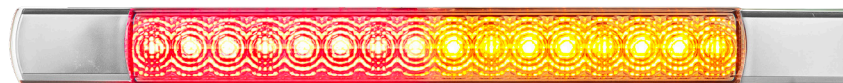


285 Series Rear Combination

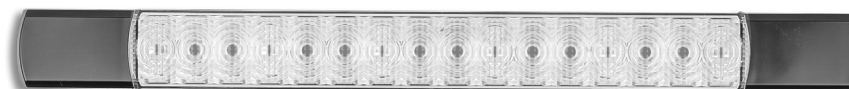
- ECE Australian Road Approved
- Low Profile Slimline Design
- Horizontal & Vertical Mount*
- Black/Chrome End Caps
- Voltage Range 12 Volt
- IP67 Rated
- 5 Year Warranty



Clear Lens when Inactive



P/N 285CAR12



Clear Lens when Inactive



P/N 285BAR12

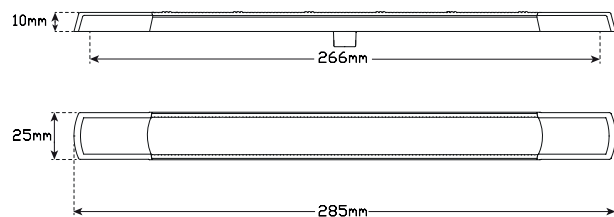
Function Stop/Tail/Indicator
Size 285mm x 25mm x 10mm
Voltage 12 Volt
LED Qty 16
Cable 85mm cable

Draw @13.8V

Stop	Tail	Ind
0.24A	0.09A	0.14A

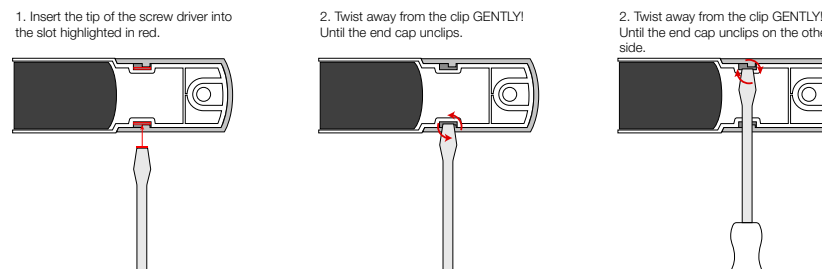
Approvals	Function	Approval No.
ECE	Stop/Tail	E9*7R02/27*22284*00
ECE	Indicator	E9*6R01/28*22284*00
CTA	Stop/Tail/Indicator	CTA-060114

*Approved for Horizontal & Vertical Mount



Fitting Instructions

Surface mount. Remove end caps by following the instructions below, fix to flat surface with screws supplied then refit end caps. Please refer to ADR 13/00 for mounting instructions.



ECE
Approved

100%
Water Proof

5 Year
Warranty



All enquiries P: (03) 9466 7075 E: led@ledtech.com.au, www.ledautolamps.com

All efforts are made to ensure all information is correct and up to date, it can be subject to change without notice. All measurements are in millimeters (mm) and are not to scale.

© All LED Technologies designs are registered throughout the world. - Current as of 22/09/2020